

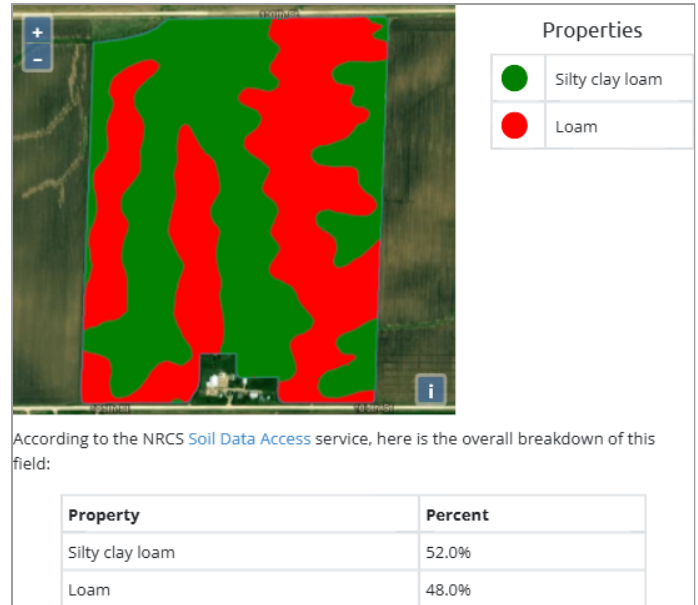
Product Trial Report

GROWER DETAILS	FIELD DETAILS	PLANTING/HARVEST DETAILS	Total Acre Final Report
Grower:	Total Acres: 112.47	Crop: Corn	Report Date: 11/13/2024
City & State: Aurora, IA	Soil Type: Please see Soil Type Map	Plant Date: 04/24/2024	Harvest Year: 2024
Zip Code: 50607	Title: Spot Tile	Row Spacing: 30"	Crop: Corn
	Irrigation: None	Planting Depth: 2.50	Trial Name: DgradeR Spring Application Trial
	Fall Tillage: Strip Till	Harvest Date: 10/19/2024	Trial Type: Preplant
	Previous Crop: Corn	Hybrid: 70F6Q	
		Seed Company: NuTech Seed	
		Population: 34000	

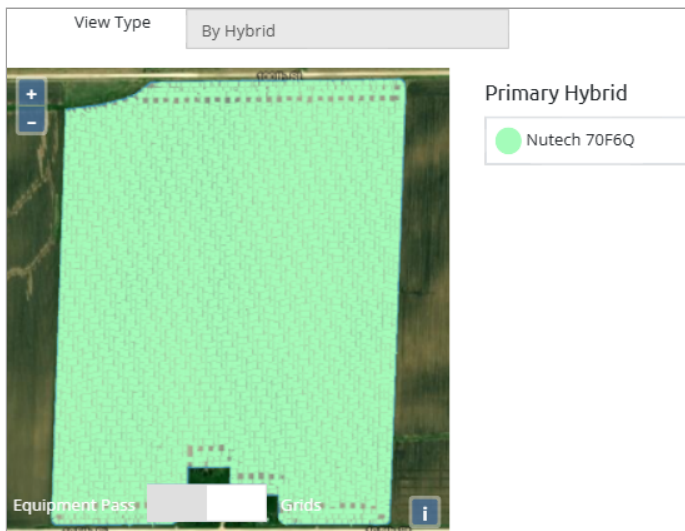
Field Map



Soil Type



Planting Map

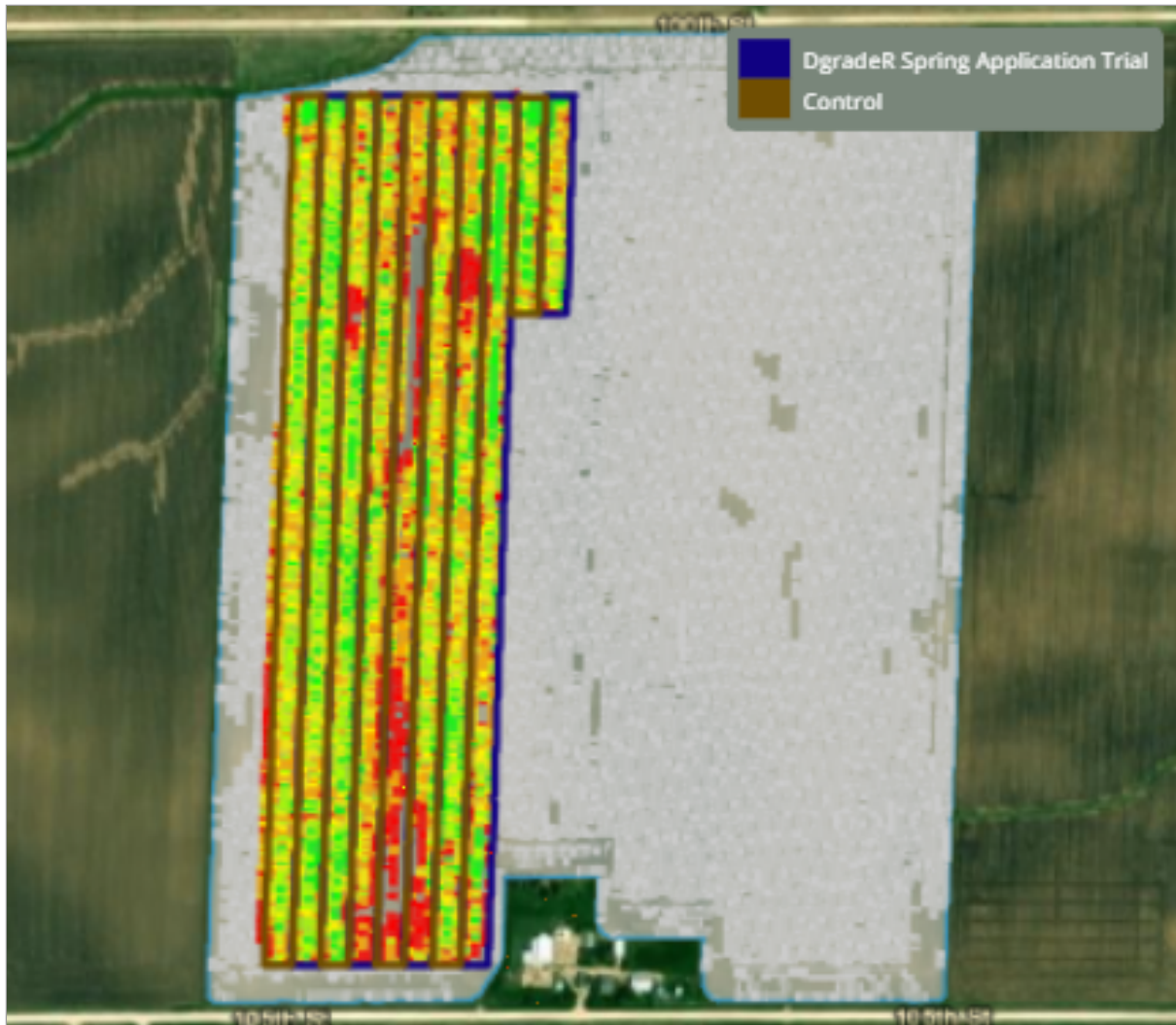


Trial Zones



Yield Results Data

High Level Yield Heat Map



This data was filtered based on -1.5 / +2 St Dev

Yield Summary BPA	
Location	Yield
DgradeR Spring Application Trial	237.09
Control	235.92
Yield Response	1.17

Yield Values	
●	170.7 - 217.8
●	217.8 - 233.4
●	233.4 - 242.4
●	242.4 - 254.3
●	254.3 - 299.1



Product Trial Report

Product Trial Comments:

This corn after corn product trial had a +1.17 bushel/acre yield response using the -1.5/+2 Standard Deviation measurement method to tighten yield data points. Mike Jenks reported a projected 20% yield loss due to flooding/drainage issues from significant rain events early in the growing season

Application Date and Details:

2023 Crop: Corn

Application Date: 4/10/24

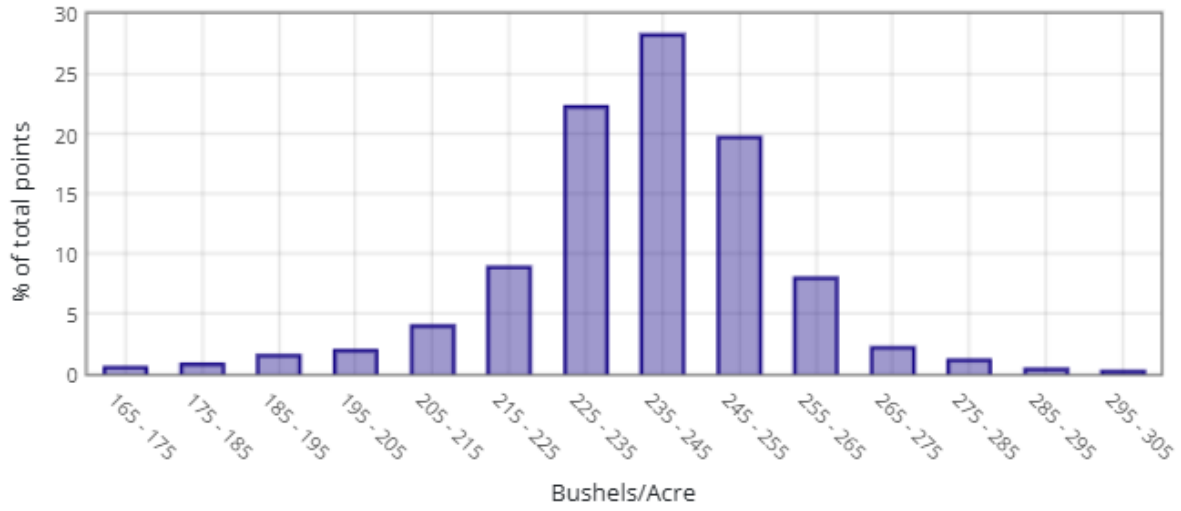
Application Method: Sprayer Broadcast

Product Application Rate/Acre: DgradeR = 48 oz., Dry Spray Grade AMS = 2 lbs.

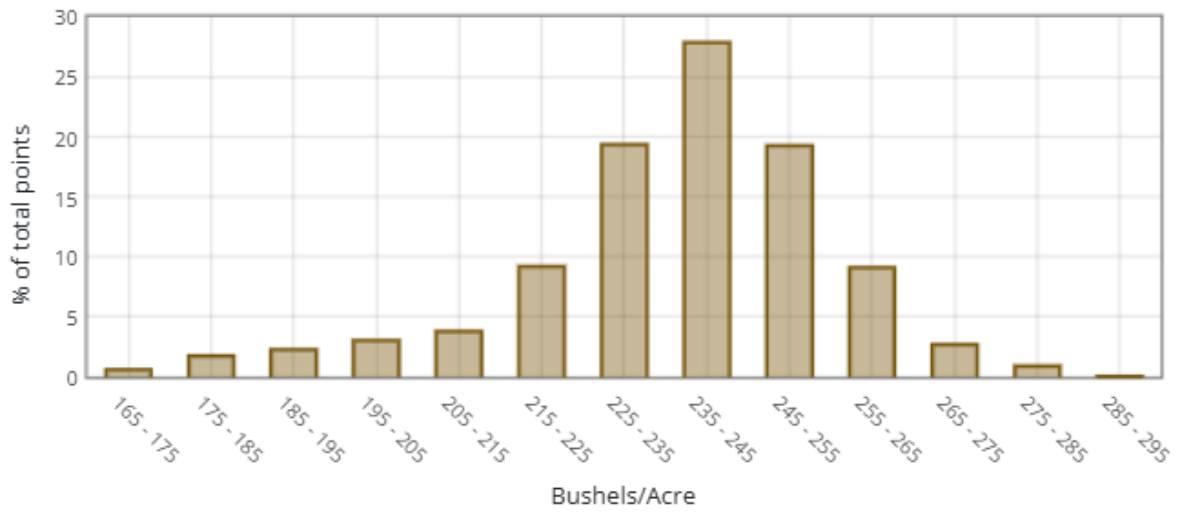
Tank Mix Rate/Acre: 20 gallons

Product Trial Report

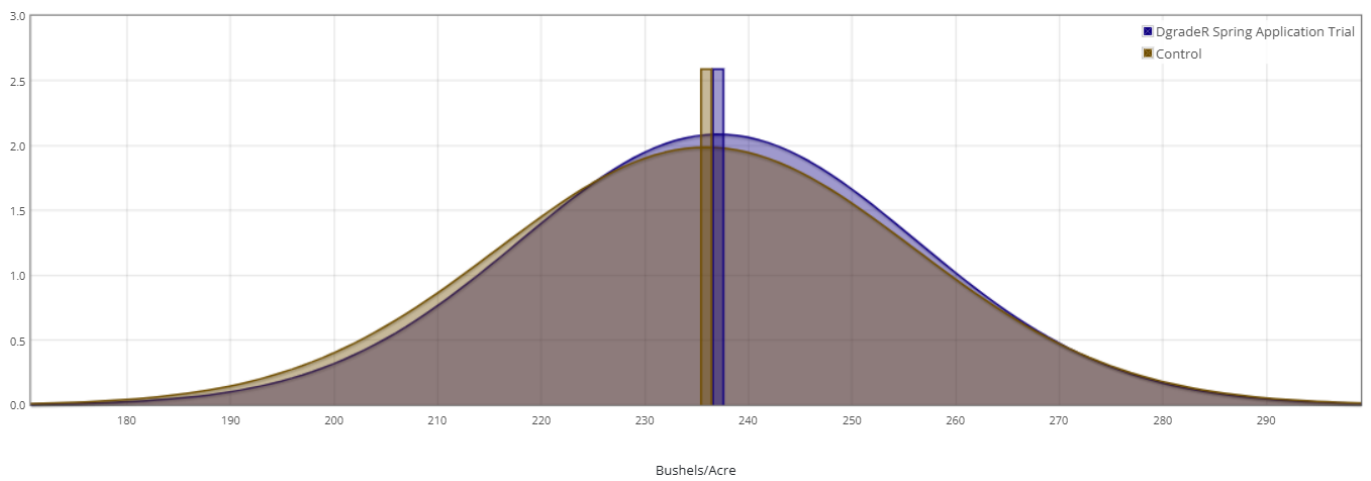
DgradeR Spring Application Trial



Control



Normal Curve Distribution





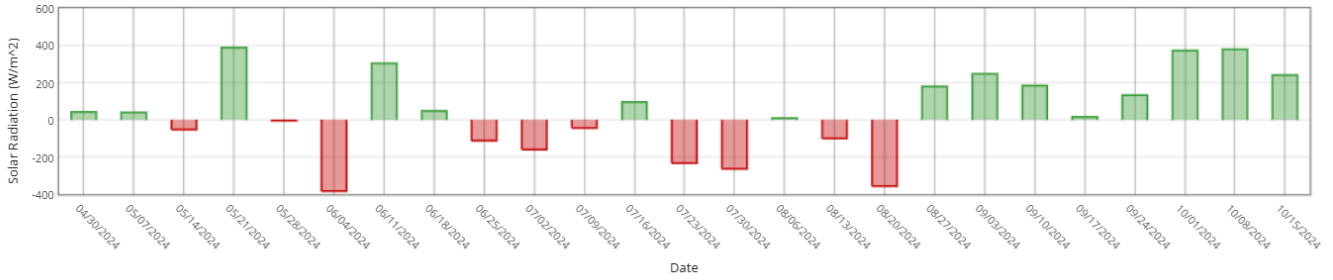
Product Trial Report

Trial Location Weather Data vs 5 Yr Avg

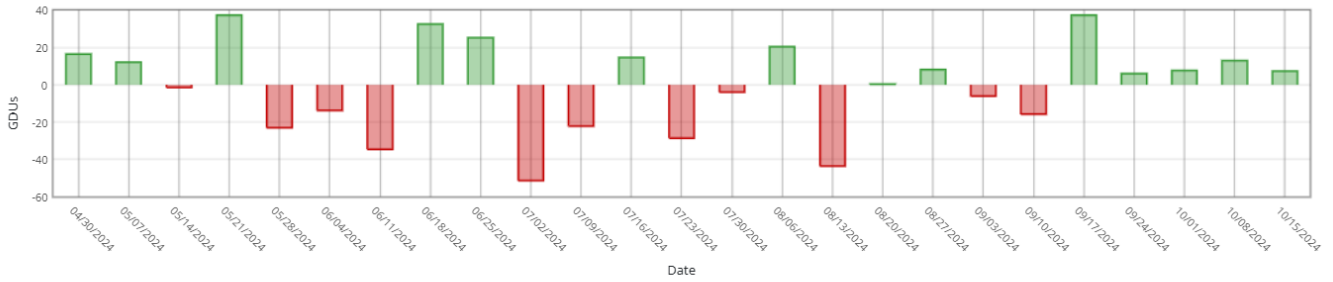
Historical Averages based on past years

Cumulative Week over Week

Sunlight



Heat (GDUs)



Rain

