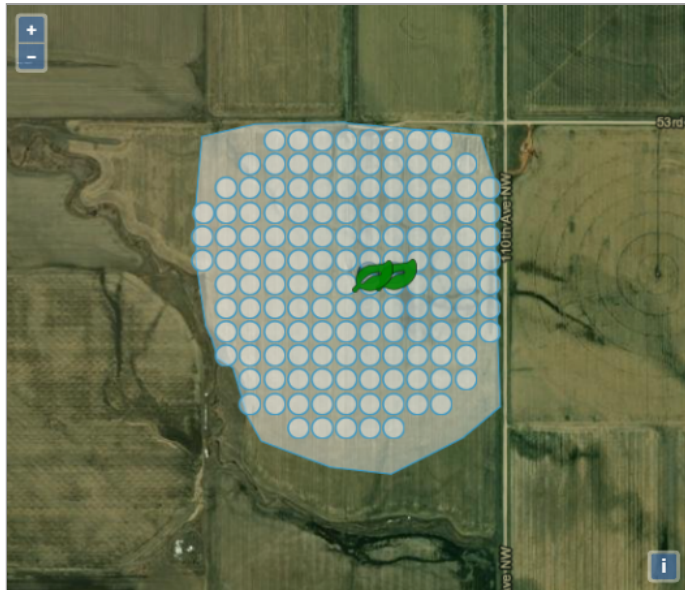


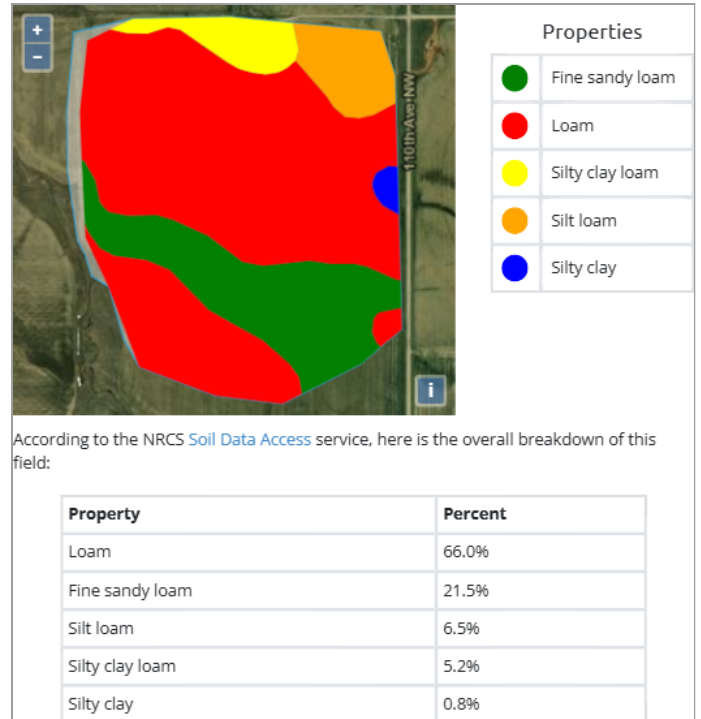
Product Trial Report

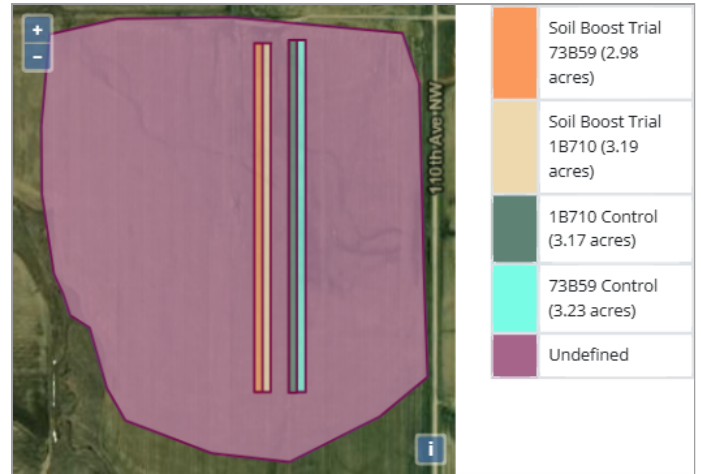
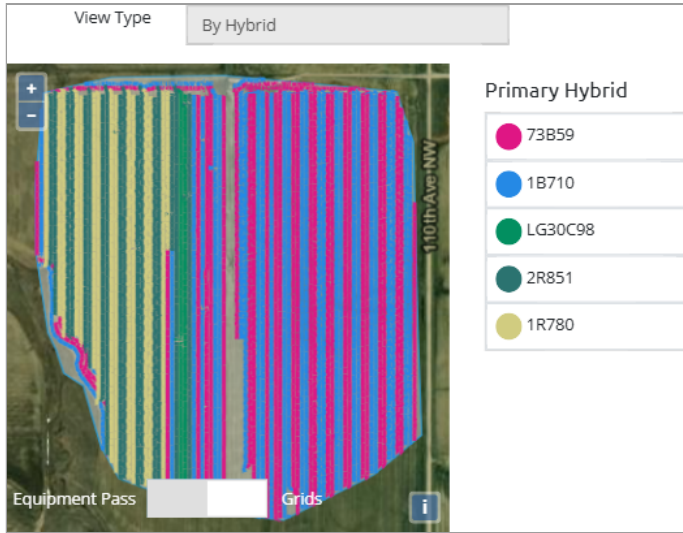
GROWER DETAILS	FIELD DETAILS	PLANTING/HARVEST DETAILS	Total Acre Final Report
Grower:	Total Acres: 179.08	Crop: Corn	Report Date: 01/26/2025
City & State: Tioga, ND	Soil Type: Please see Soil Type Map	Plant Date: 06/05/2024	Harvest Year: 2024
Zip Code: 58852	Tile: No Tile	Row Spacing: 30"	Crop: Corn
	Irrigation: Pivot	Planting Depth: 2.50	Trial Name: Soil Boost Trial (Year 2 of 3 Year Trial)
	Spring Tillage: Strip Till	Harvest Date: 11/10/2024	Trial Type: Preplant
	Previous Crop: Soybean	Hybrid: 73B59	
		Seed Company: REA	
		Population: 34000	

Field Map



Soil Type







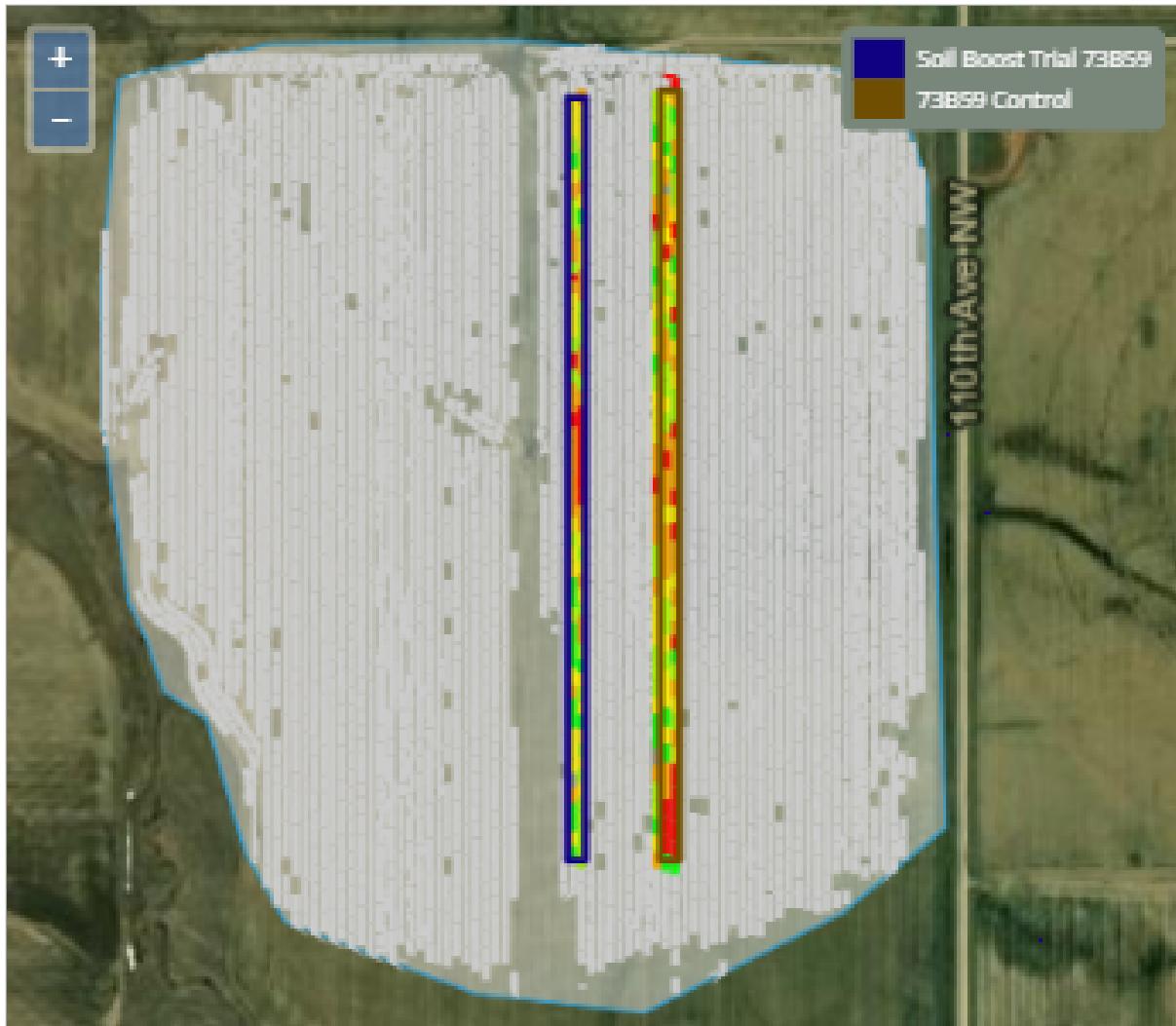
Product Trial Report

Tissue Results Data

Date	GDU	Water	Tissue Site	Nitrogen	Phosphorus	Potassium	Magnesium	Calcium	Sulfur	Zinc	Manganese	Copper	Iron	Boron	Aluminum	Molybdenum	Sodium
07/16/2024	628	-	Soil Boost	4.32 %	0.3 %	3.14 %	0.22 %	0.35 %	0.36 %	25.66 ppm	121.33 ppm	15.17 ppm	346 ppm	13.74 ppm		1.05 ppm	0.21 ppm
			Control	4.59 %	0.31 %	2.89 %	0.3 %	0.41 %	0.36 %	25.23 ppm	111.85 ppm	13.87 ppm	286 ppm	16.22 ppm		1.42 ppm	0.17 ppm
07/23/2024	798	1.1 in	Soil Boost	4.36 %	0.28 %	2.8 %	0.24 %	0.39 %	0.37 %	26.85 ppm	94.11 ppm	12.32 ppm	288 ppm	8.88 ppm		1.18 ppm	0.4 ppm
			Control	4.19 %	0.35 %	3.09 %	0.25 %	0.38 %	0.4 %	30.07 ppm	105.29 ppm	14.65 ppm	288 ppm	10.02 ppm		1.18 ppm	0.38 ppm
07/29/2024	934	1.1 in	Soil Boost	4 %	0.31 %	2.57 %	0.17 %	0.34 %	0.29 %	29.68 ppm	82.94 ppm	12.37 ppm	286.75 ppm	12.15 ppm		0.8 ppm	0.54 ppm
			Control	4.04 %	0.33 %	2.36 %	0.15 %	0.37 %	0.26 %	26.03 ppm	71.7 ppm	11.48 ppm	274.66 ppm	12.43 ppm		0.79 ppm	0.5 ppm
08/06/2024	1105	2.9 in	Soil Boost	3.4 %	0.35 %	2.56 %	0.18 %	0.29 %	0.26 %	37.5 ppm	73.98 ppm	12.17 ppm	202.42 ppm	12.37 ppm		1.17 ppm	0.23 ppm
			Control	3.43 %	0.37 %	2.4 %	0.25 %	0.39 %	0.27 %	37.64 ppm	89.7 ppm	10.48 ppm	194.45 ppm	13.67 ppm		1.09 ppm	0.22 ppm

Yield Results Data

High Level Yield Heat Map



This data was filtered based on $-1.5 / +1.5$ St Dev

Yield Summary BPA	
Location	Yield
Soil Boost Trial 73B59	148.77
73B59 Control	144.29
Yield Response	4.48

Yield Values	
●	101.7 - 130.7
●	131.1 - 144.8
●	144.8 - 152.3
●	152.3 - 162.5
●	162.7 - 182.9



Product Trial Report

Product Trial Comments:

This trial is Year 2 of a 3 year study using Soil Boost. This plot had 2 different hybrids planted in it. The 73B59 portion had a +4.48 bushel/acre yield response using the $-1.5/+1.5$ Standard Deviation measurement method to tighten yield data points. This plot had a projected 30% yield loss due to late plant date and a high wind event.

The original plot size was trimmed to address yield variation and to incorporate both hybrids into this study.

Penetrometer Readings

The readings done in early August and mid September showed excellent progress being made to reduce compaction

8/6/24 Results

- **Trial** - 200 psi at 18 inches. Buried probe to 36 inches, not over 300 psi
- **Control** - 200 psi at 10 inches. 22 inches at 300 psi

9/13/24 Results

- **Trial** - 200 psi at 4 inches, 300 psi at 28 inches
- **Control** - 200 psi at 3 inches, 300 psi at 12 inches

Application Date and Details:

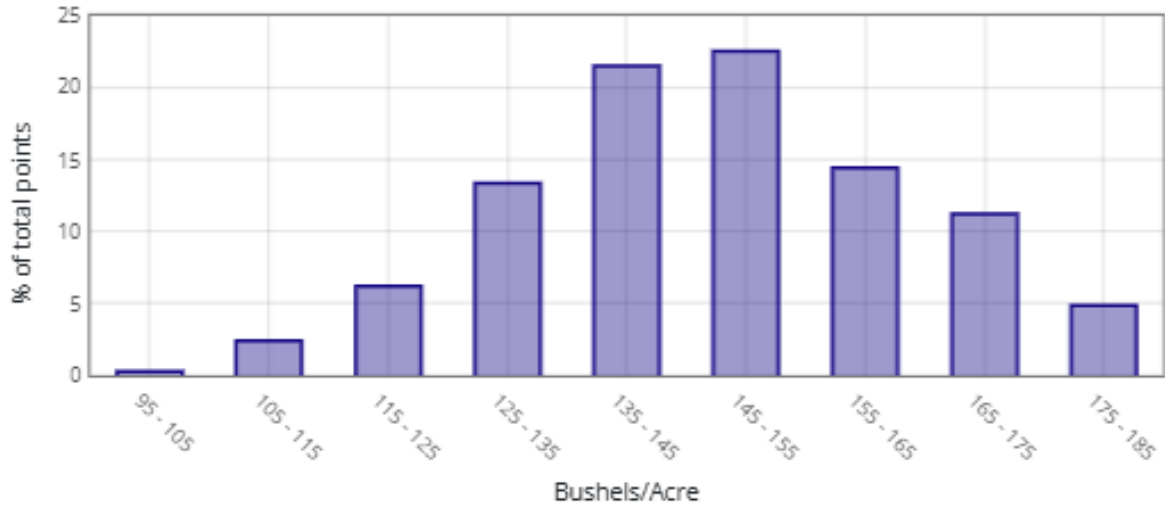
Application Date: 6/2/24

Application Method: Broadcast

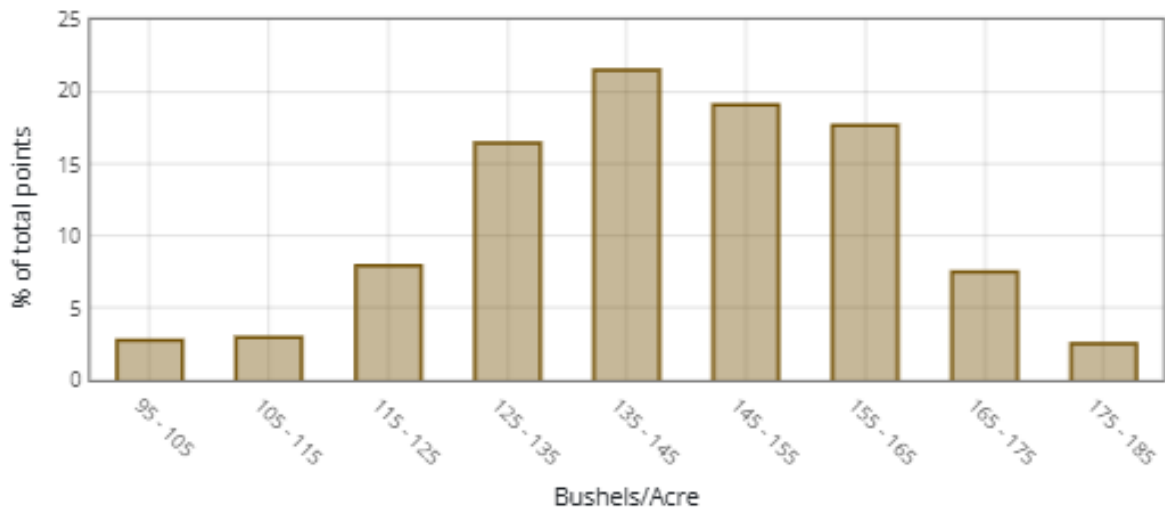
Product Application Rate/Acre: Soil Boost = 150 lbs.

Product Trial Report

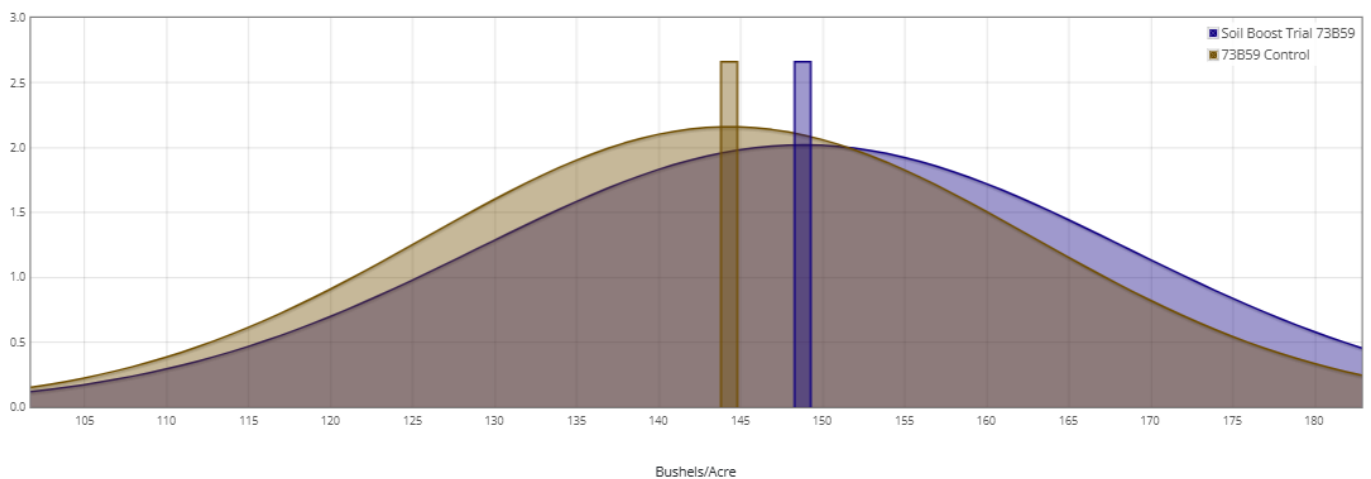
Soil Boost Trial 73B59



73B59 Control



Normal Curve Distribution





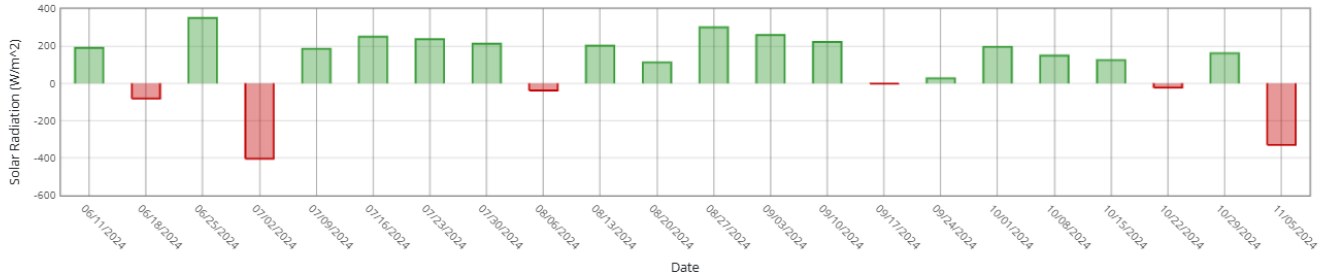
Product Trial Report

Trial Location Weather Data vs 5 Yr Avg

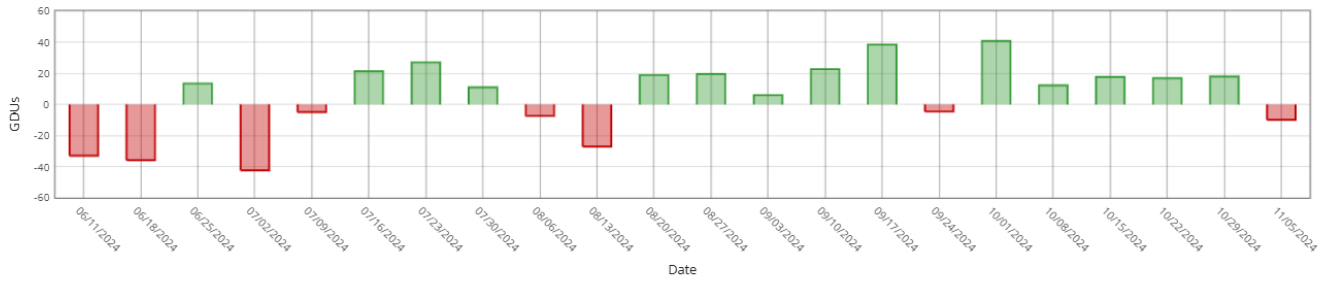
Historical Averages based on past years

Cumulative Week over Week

Sunlight



Heat (GDUs)



Rain

